

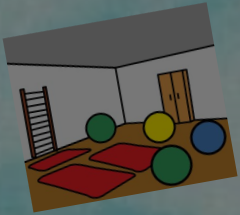
# Johnson Early Childhood Center

June 16, 2022

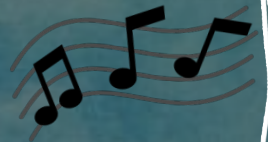


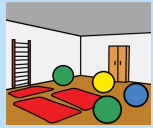
# Johnson Early Childhood Center

## June 16, 2022



1. PT equipment
2. Music
3. Art Show
4. Super Friend Ceremony





## Equipment Use

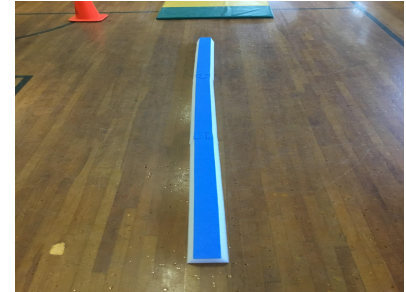
## Gross Motor Benefits

## Pictures of Equipment

### Balance Beam

- Walking on top
- Jumping over front to back
- Jumping over side to side
- One leg standing
- Walking backwards

- Balance skills
- Walking backwards
- Jumping over
- Core strengthening
- Body coordination



### Parachute

- Lifting up with peers
- Sitting underneath
- Tossing bean bags on matching colors
- Shaking to keep bean bags on top
- Walking in a circle with music, stop and turn directions

- Cooperating with peers
- Coordinating the parachute
- Shoulder movement
- Motor planning



## Tunnel

- Crawling inside
- Scooting backwards or forwards
- Going through with adaptive equipment
- Commando crawling

- Upper and lower body strengthening
- Inclusive play with non-ambulatory peers
- Somatosensory input

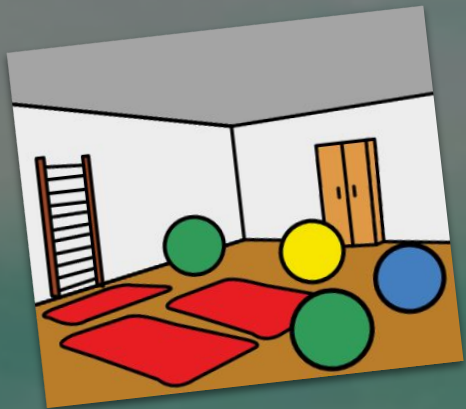


## Big Bowling

- Rolling the ball
- Kicking the ball
- Throwing the ball
- Aiming to knock all pins down
- Can be played sitting, standing, or in any adaptive equipment

- Social skills, turn-taking
- Strengthening
- Balance
- Accuracy of target tasks
- Improving ball skills





# PT Equipment















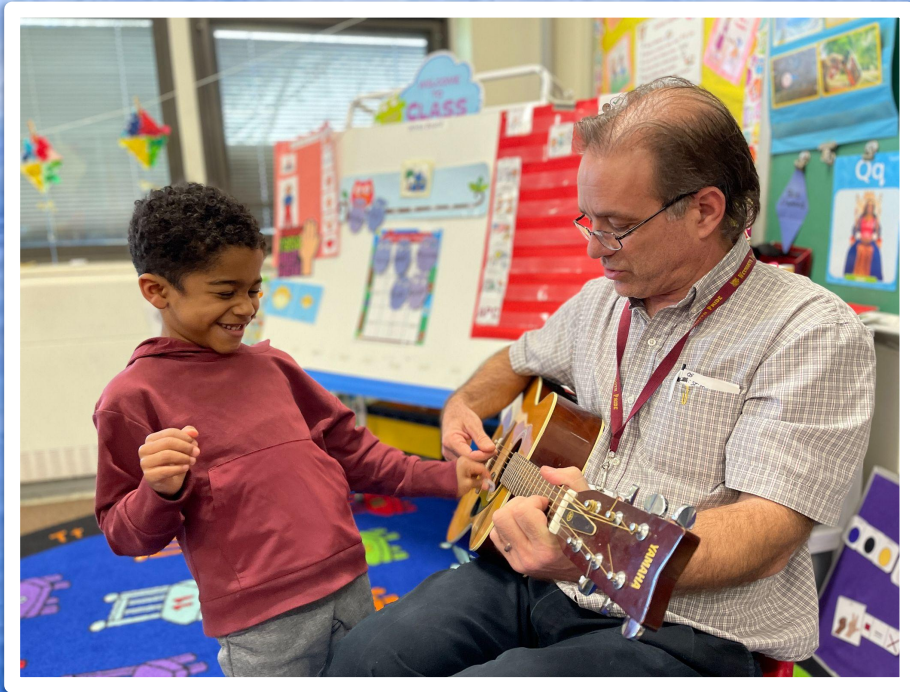


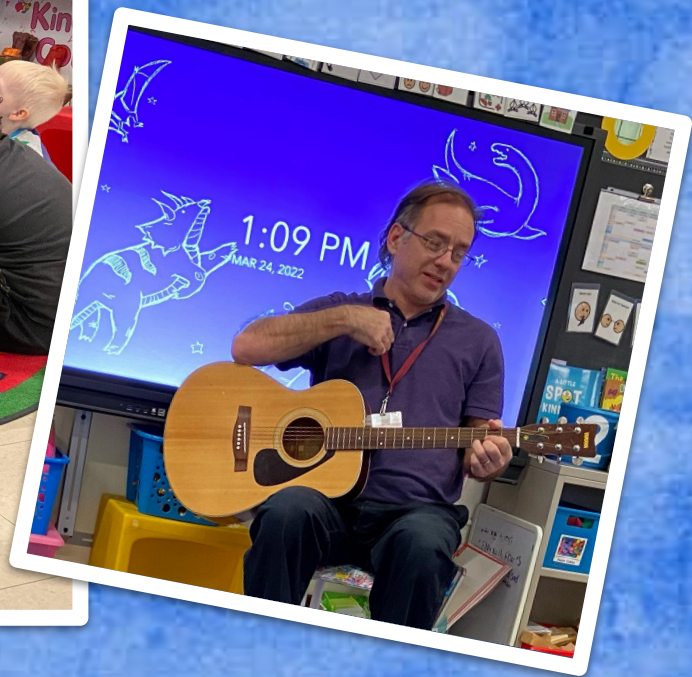






# Music with Mr. Duff





# JECC Art Show

June 2022

















# Super Friend Ceremony



JECC Super Friends  
are good friends,  
safe and kind!

